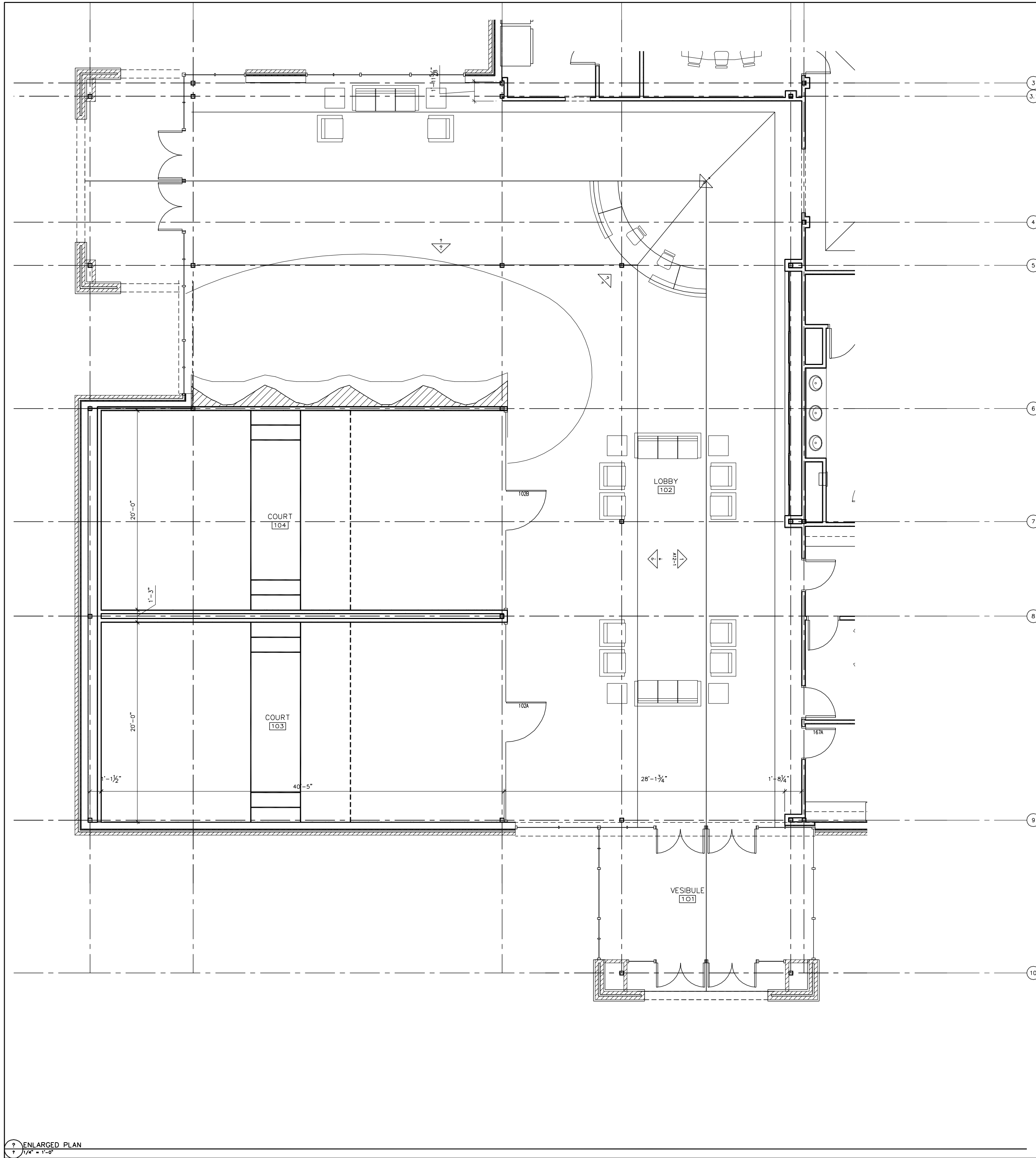


\\BIGD\VI\DEPT\CADD\ARCH\PRJ\200710002\ARCH\CAD\SHREINER UNIVERSITY - FITNESS CENTER\SHEETS\ISSUE FOR XXX\3-11 ENLARGED PLAN.DWG




KEY PLAN:

NORTH

NOTES:

NO	REVISION	DATE



 GS&C
 architecture
 interior design
 303 South Street, Suite 1000, North, Texas 75002
 817-477-5417 www.gs&c-inc.com

PROGRESS PRINT 00/00/0000
 FOR INTERIM REVIEW AND NOT
 INTENDED FOR BIDDING, PERMIT,
 OR CONSTRUCTION PURPOSES

SHEET TITLE:
ENLARGED PLAN

DATE: 4/16/2007	PRJ. NO.: 200710002
DRAWN BY: .	SHEET NO.:
CHECKED BY: .	A3-11
SCALE: AS SHOWN	

4/16/2007
ISSUE FOR XXX
GS&C - 200710002 - Shreiner University - Fitness Center

ENLARGED PLAN
1/4" = 1'-0"