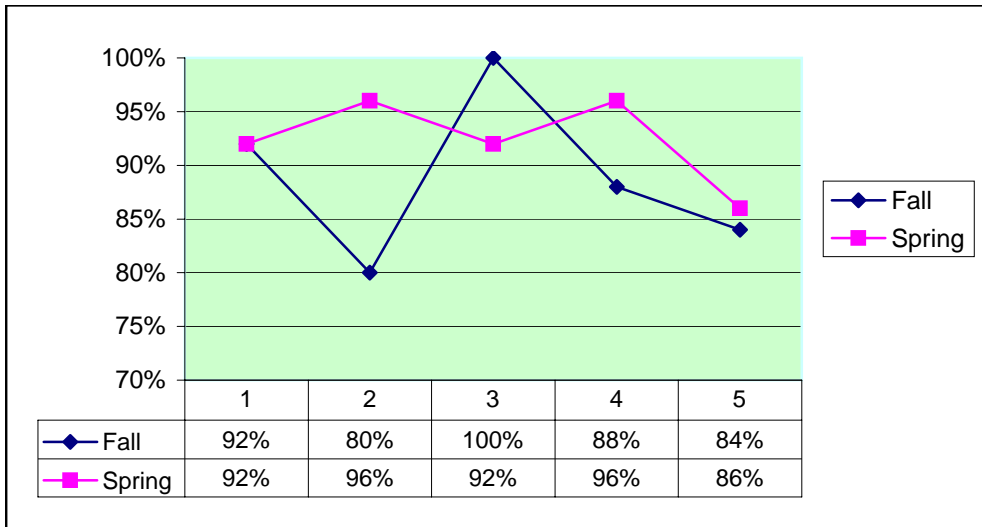


### Vocational Nursing Pass Rates

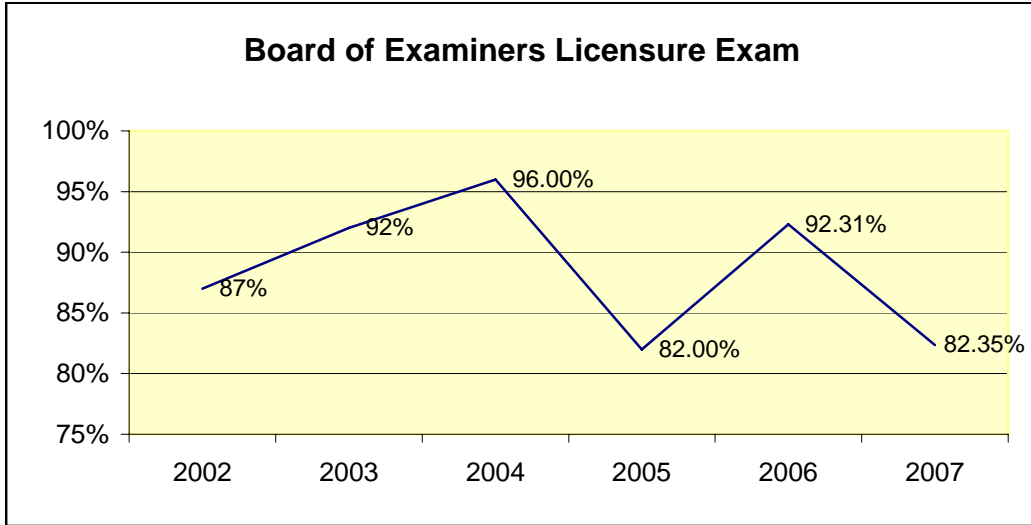
	Pass (N)	Pass Rate
Fall 2005	25	92%
Spring 2005	25	92%
Fall 2004	28	80%
Spring 2004	26	96%
Fall 2003	29	100%
Spring 2003	26	92%
Fall 2002	24	88%
Spring 2002	24	96%
Fall 2001	25	84%
Spring 2001	22	86%



Source: Internal Data

**Annual Pass Rates**  
**Board of Nurse Examiners for the State of Texas**

	2007	2006	2005	2004	2003	2002
%	82.35%	92.31%	82.00%	96.00%	92%	87%
N	42/51	48/52	41/50	52	48	45



Source: Board of Examiners for the State of Texas