

Inside Schreiner

NEWSLETTER OF SCHREINER UNIVERSITY

Winter 2008 Volume XII, Number 1

President's Perspective

By Dr. Tim Summerlin

Friend and former trustee

Clyde Parker recently shared an interesting piece of history with me. It was a typed document with the title "Financial Aids to Students, as Shown by the Report to the Athletic Commission of the Texas Association of Colleges (Covering the year 1929-30)." Clyde found this in the files of his father-in-law, Mr. Scott Schreiner, who became a trustee in 1930.

You might be as surprised as I was to know the membership of the TAC in 1929-30. Not surprisingly, UT, A&M, SMU, TCU and Rice were members. Others included Daniel Baker, Sul Ross, St. Mary's, John Tarleton, Lutheran College of Seguin and Schreiner Institute. Listed for each of the 20 institutions (seven of them junior colleges) are the funds allocated for campus employment of athletes as well as for scholarships and loans.

Would it surprise you to know that in that year Schreiner provided more financial aid to athletes than did either Texas A&M or the University of Texas? Indeed, Schreiner's expenditures (all for employment) ranked sixth of all colleges listed, at the grand total of \$10,291! The document also contains statistics on working students for 1930-31, when 106 of the 287 at the institute received some work aid. The final entry provides the "percentage of such new students who were (or likely have thought they were) athletes." Some of them must have been the genuine article, since the football team in 1929 went 10-0-1!

continued on page 3

In This Issue...

Schreiner Choir	3
Calendar of Events	4
Sports	5
Mountaineer Center	6
Honor Roll of Donors	7

Schreiner announces 2008 Distinguished Alumni and Athletic Hall of Honor Inductees

Schreiner University's

Distinguished Alumni for 2008 are Grady Spencer Blocker and Robert Rhea Barton. Dr. Robert Henry and Charles H. Johnston Jr. will be inducted into the University's Athletic Hall of Honor, Johnston posthumously. All four will be honored at a banquet April 12, during Recall 2008 weekend.

Robert Henry

Dr. Robert Henry was a coach at Schreiner College from 1982 to 1994, and was the prime mover behind the formation of the school's varsity baseball team.

"Schreiner University baseball exists largely because of the efforts of Bob Henry," Dr. John Huddleston said. "Henry convinced the administration that baseball was a viable sport for Schreiner. He fielded the first team, procured the materials for a baseball field, and laid out and physically built much of the field that I personally believe should carry his name. He brought collegiate baseball to the Texas Hill Country." Huddleston, who is a professor of history and dean of the School of Liberal Arts at Schreiner, nominated Henry for the Athletic Hall of Honor. He also worked for Henry.

"For five years I was fortunate enough to be his assistant coach, and during that time I watched Coach Henry build and nurture the baseball program. His contribution to what was then Schreiner College was huge," Huddleston said.

Before Henry became a Schreiner art instructor and sports coach, he taught and coached at other schools on the high school and college level. He also worked as a special scout for some professional ball clubs, including the Philadelphia Phillies, Cleveland Indians and Chicago Cubs. He played baseball in high school and college.

"I had a chance to play professionally, but probably would have stayed in the minor leagues," Henry said.

He came to Schreiner in what he smilingly refers to as "the pioneer days," when Schreiner was changing from a two-year to a four-year institution. Part of that change involved becoming eligible to join the National Association of Intercollegiate Athletics.

"To join NAIA, we needed another men's sport," Henry said. "Baseball was the most economical to add. In those days, we had more bills than money."

While the basics of the baseball program were being put together, Henry worked on the art department curriculum and coached women's basketball and soccer. He was the first coach of the soccer team.

"We won our first match and that's it," he said. "I always say I was the soccer bus driver. The only thing I knew about soccer was how to spell it."

Henry coached the baseball team without pay for its first year, and put more than \$5,000 of his own money into the program in its first half decade. Local companies helped by donating some of the building supplies and volunteers—including Schreiner alumni, faculty, staff and students—helped build dugouts and stands and set up the field.

"Texas Ranger manager Bobby Valentine, a friend of mine, donated the special infield dirt mix and the infield grass—just like the Rangers had on their field," Henry recalls.

Virtually everything the team needed came through volunteers and donations of money, time and sweat. Henry said it was "a lot like a barn-raising. Everyone pitched in."

Henry and his teams maintained the playing field. "A lot of times before a game, the team would be practicing and I would be on the riding lawnmower," he remembered. "They had bets as to who could hit me as I mowed around the field. I had to keep one eye on the grass and the other on home plate."

continued on page 2

Distinguished Alumni/Athletic Hall of Honor continued from page 1

In Henry's time at Schreiner, his baseball teams won 255 games and went on to post-season play-offs eight times. They were NAIA District 4 champions three times.

Both current Schreiner head baseball coach Joe Castillo and JV head coach Rodney Holland played for Henry and were team captains. Sixteen Schreiner players coached by Henry were named to all-conference teams, and one of his players, David Hulse, was an NAIA All-American. Five players were drafted by professional clubs. Hulse went on to play in the majors for the Texas Rangers.

Henry went on to become an ordained youth minister. He stays in touch with many of his former players.

His former volunteer assistant coach, John Huddleston, would like to see the Schreiner baseball field named for Henry, as the moving force behind all the donations and organization that made Schreiner baseball possible.

"If I had my choice," said Henry, "I'd call it Pioneer Field. Schreiner's come so far, and I'm proud of how far they've come. I'm also proud to have been on that first wagon train."

Charles H. Johnston Jr.

Schreiner honored Charles H. Johnston Jr. '32 as a Distinguished Alumnus in 1990 for his important contributions to Kerrville and Kerr County as a business leader and volunteer. This year, the University honors him for his football career by inducting him posthumously into the Athletic Hall of Honor.

Johnston was nominated by his daughter Betsy Johnston Rhoden. "I nominated my father for the Athletic Hall of Honor because he was absolutely the best father in the entire world and I just knew that being selected would have meant so much to him," Rhoden said. "I am so grateful to the committee for selecting him for this wonderful honor."

Johnston was a quarterback for Tivy High School before coming to Schreiner Institute in 1930, where he played for Coach H. C. "Bully" Gilstrap, who was inducted into Schreiner's Athletic Hall of Honor in 2004. Johnston played quarterback for Schreiner for two years. After one game, a local sports reporter wrote of him: "The consistent work of Johnston at quarter, a most valuable

aid to the team the entire season, was particularly outstanding." After leaving Schreiner, Johnston went on to play for The University of Texas Longhorns, lettering for two years.

He was also an excellent student and a member of the Phi Theta Kappa National Honor Society for Junior Colleges.

In later years, his service to the community led to his being named Outstanding Citizen of the Year by the Kerrville Chamber of Commerce, as well as becoming a Schreiner Distinguished Alumnus.

"One of his proudest moments came when he was named an Alumnus of the Year by Schreiner College," Rhoda said. "It was an honor he treasured, but knowing him as I well as I did, I suspect that an award honoring his beloved football days would bring a bigger smile to his face."

Robert Rhea Barton

Robert Barton '56 entered Schreiner Institute in 1951 as a high school sophomore and continued through high school and two years of college to obtain his Associate of Arts degree.

"Schreiner is one of the best things that ever happened in my life," Barton said. "Both for the education I received and the opportunities it opened for me—and I met my future wife there."

Corinne Orr Carlisle, who also attended Schreiner, nominated Barton for the honor. "I've known Bob Barton since the early '50s," she said. "He was always an outstanding student, officer in the Schreiner Institute Cadet Corps, lawyer, judge and American citizen. I'm proud to be a fellow Schreiner student and longtime friend of Bob's."

Not surprisingly in light of his subsequent career, he majored in pre-law and went on to The University of Texas and The University of Texas School of Law. He was a member of the Law Review, an honor reflecting on both his scholarship and his writing ability.

After graduating law school, Barton hung out his shingle in Kerrville. He served the community as county attorney of Kerr County for five years, district attorney of the 2nd 38th Judicial District for four years and from 1977-1989 was judge of 216th Judicial District, which

covers Kerr, Bandera, Kendall and Gillespie counties.

Barton taught criminal law for the Schreiner College law enforcement department from 1973-1977 and, after retiring as district judge, he went on to teach law at St. Mary's University School of Law in San Antonio. He retired as a tenured professor in 1998.

You'd think all this was enough to keep one man busy, but Barton also had time to write several books and journal articles about the practice of Texas law. He continues to update "Texas Rules of Evidence Manual," which he co-authored with Hulen D. Wendorf and David A. Schlueter, in its seventh edition, as well as "Texas Search and Seizure," which he wrote in 1992. As a district judge, Barton has more than once administered the oath of office to oldest son Clay Barton, who is a chief deputy with the Kerr County Sheriff's Department.

Barton was a founding member of the Kerrville Optimist Club and was president of the Kerrville Jaycees in the early '60s. He is also a founding member of The Poverty Playboys, a bluegrass band for which he played tenor banjo and was the lead vocalist. For a time, his wife Joyce (also a 1956 Schreiner graduate) and son Clay played with the band. The Playboys played for Recall 1985 and "retired" in 2005. "Bob was a pretty fair banjo player," Carlisle said.

Barton is a longtime member of the First Presbyterian Church in Kerrville, where he has been both an elder and a deacon.

For the past decade, Barton has been a senior district judge for Kerr County and has continued to write about Texas law. He has co-authored the "Texas Rules of Evidence Trial Book" and written "Fundamentals of Texas Trial Practice."

"I am pleased with what has occurred with Schreiner," Barton said. "I think the changes were necessary, but I enjoyed the military environment, the structure, discipline and camaraderie of my time there."

Grady Spencer Blocker

In his nomination letter for Grady Spencer Blocker '51, Wendell Mayes '42 wrote, "There are many different relationships that come to my mind when I think of Spencer, but my first thought

continued on page 3

Distinguished Alumni/Athletic Hall of Honor continued from page 2

always relates to Schreiner—to the dedication and loyalty he has shown to Schreiner through the years since he was a teenage cadet.” More than one person writing in support of Blocker’s nomination mentioned loyalty as one of his conspicuous virtues.

And he expresses that loyalty to Schreiner and to his community in Midland in concrete ways, contributing his time and donating funds to help both thrive. Mayes said he knew of “no one who has been more active in Schreiner affairs than he has.”

“I was a student there only one year,” Blocker said. “Sometimes people ask me, ‘How come you’re so active, when you were there just a year?’ I tell them Schreiner was and is the most caring school in the nation.” When asked why he didn’t return after that year, Blocker, who is from the much flatter Stanton area, said, “I got kind of claustrophobic with all those trees and hills around. I was dating my wife the year I went to

Schreiner. Now that I think about it, that could have had something to do with it, too.”

Blocker has been a lifetime member of the Schreiner Former Student Association since 1989, and was president of SFSA 1995-1997. He also has generously supported Schreiner financially over the years. He has been a member of Schreiner Oaks Society since 1996. Schreiner Oaks members are those who have remembered Schreiner in their estate plans.

In Midland, Blocker has had a long career as a savings and loan officer, and in commercial real estate. He also owns family farms in Martin County, Texas. He was a longtime member of the Midland Jaycees, and organized a reunion of former Jaycee members in 2005. He has long been an active part of Midland Chamber of Commerce and has a perfect attendance record for more than 30 years with the Midland Rotary Club.

“Spencer has been a mentor to many

of us on Midland Jaycees and Rotary International, and we are grateful for his guidance,” Texas House of Representative speaker and long time acquaintance Tom Craddick wrote.

Blocker’s many civic activities over the years have included organizing Easter egg hunts and baseball and basketball leagues; Christmas for underprivileged children; and building a hill in Midland for the Soap Box Derby. “I spent one whole summer building that thing,” he said. The All-American Soap Box Derby organization credits Midland as a “breeding ground for innovative Derby design” in the 1960s.

Blocker was modest about becoming a distinguished alumnus: “I keep telling everyone that this maybe waters down the honor.” He wants to dedicate the honor to his wife, Anita, who died in 2006.

“She was the backbone of me,” he said.

Schreiner Choir Returning to Carnegie Hall

The Schreiner University Choir will return to New York City’s Carnegie Hall this spring to perform with nine other choirs from all over the U.S. According to choral director Michael Kahl, 32 people will be making the trip on April 7, including choir members, parents and guests from the community. Among the pieces the choir will perform are John Rutter’s “Gloria” and his new work, “The Winchester Te Deum.” Rutter will conduct the New England Symphonic Ensemble for the choir performances.

Choir members are selling discount books for local businesses to raise money, and proceeds from the choir dinner theater will also go toward travel expenses. That event will take place at 6 p.m., March 7 and 8 at First United Methodist Church in Kerrville.

“Someone once asked the great violinist, Isaac Stern, ‘How do you get to Carnegie Hall?’ Kahl said. His response was ‘Practice, practice, practice.’ This will be the Schreiner Choir’s second trip to Carnegie Hall in three years. This is a wonderful opportunity for Schreiner University and Kerrville to be represented in one of the most famous concert halls in the world. The students will never forget this experience and the opportunity to perform with a first-rate orchestra and world-famous composer and conductor John Rutter.”

For more information or to contribute to the travel fund, call Michael Kahl at 830-792-7417 or send an e-mail to mgkahl@schreiner.edu. You can learn more about the choir and its trip on the Web by going to www.schreiner.edu.

President’s Perspective continued from page 1

Well, things change and things remain the same. Instead of football, basketball and track, we have 13 intercollegiate teams, men’s and women’s. As an NCAA Division III school, we offer no athletic scholarships, but, like our general student population, our student-athletes receive financial aid based on both need and merit. And they are well represented among our outstanding students in general, as measured by their presence on the Dean’s and President’s lists, Who’s Who, Mountaineer Leadership participation and any other measure. We are proud of them and of the role that intercollegiate athletics plays on campus.

This edition of Inside Schreiner offers an article about a most exciting step into Schreiner’s future as we prepare to launch the first phase of the Mountaineer Center. This project addresses the needs of all students, not merely our athletes, as is well illustrated by the new fitness and wellness center that is the crown jewel of the first phase. Campuswide recreation, health, lifetime sports and academic study will be served by our new and renovated facilities. But among its blessings, the Mountaineer Center is a resounding response to one of the very few areas of student satisfaction where Schreiner has lagged behind its peers nationally, as measured by the Noel-Levitz survey that we administer biennially: “The intercollegiate athletic programs contribute to a strong sense of school spirit.” Complementing the recent strengthening of our coaching staff and athletic administration, the Mountaineer Center will be an eloquent way of saying to our student body, “We hear what you say.”





February

February 6

Texas Music Coffeehouse Series—
Featuring LZ Love & Lightning Red with special guest Clifton Fifer, Floyd & Kathleen Cailloux Campus Activity Center Lion's Den on the Schreiner campus, 7 p.m.

February 11

Monday Night Fiction—
“Grand Opening” by Jon Hassler, presented by Pat Chastain, William Logan Library, Scarle-Philips Room, 7 p.m.

February 25

Robert P. Hallman Chautauqua Lecture Series—
“Layman’s Look at the Hubble Telescope,” presented by Dr. William Sliva, Floyd & Kathleen Cailloux Campus Activity Center Theatre, 7 p.m.

March 1

Star Party—
Riverside Nature Center, 7:20 p.m.

March 3

Harry Crate Lecture—
“Molecular Recognition of Peptides by Synthetic Receptors,” presented by Dr. Adam Urbach, professor of chemistry at Trinity University, Floyd & Kathleen Cailloux Campus Activity Center ballroom, 7 p.m.

March 10

Monday Night Fiction—
“A Confederacy of Dunces” by John Kennedy Toole, presented by Dr. Jude Gallik, William Logan Library, Scarle-Philips Room, 7 p.m.

March 12

Texas Music Coffeehouse Series—
Featuring Terri Hendrix and Lloyd Maines, Floyd & Kathleen Cailloux Campus Activity Center Lion's Den, 7 p.m.

March 17-24
Spring Break

March 31

Robert P. Hallman Chautauqua Lecture Series—
“Why I Care About Turtles: Does it Matter if One Endangered Species Goes Extinct?” presented by Dr. Diana Comuzzie, Floyd & Kathleen Cailloux Campus Activity Center Theatre, Schreiner University, 7 p.m.

April

April 2

Texas Music Coffeehouse Series—
Featuring Thom “The World” Poet, Floyd & Kathleen Cailloux Campus Activity Center Lion's Den, 7 p.m.

April 3

Margaret Syers Lecture Series—
“Shakespeare and the End of the World,” presented by Dr. David Mulry, Floyd & Kathleen Cailloux Campus Activity Center ballroom, 7 p.m.

April 7

Speak Truth to Power—
“Tort Reform: Issues and Consequences,” presented by attorney Gary Rodriguez, Floyd & Kathleen Cailloux Campus Activity Center Theatre, 7 p.m.

April 11-13

Recall Weekend is Schreiner’s homecoming and features a variety of events across campus. For details, go to www.schreiner.edu/recall.

April 14

Monday Night Fiction—
“Atonement” by Ian McEwan, presented by Sally Hannay, William Logan Library, Scarle-Philips Room, 7 p.m.

April 16-19

Texas Writers Conference and Workshop—
Keynote speaker and resident artist: Bret Anthony Johnston, author and director of creative writing at Harvard University. Floyd & Kathleen Cailloux Campus Activity Center. For more information contact Kathleen Hudson at 830-792-7409.

April 26

Star Party—
Riverside Nature Center, 9 p.m.

April 27

University Choir Concert—
Dietert Auditorium, 6 p.m.

May 10

Graduation—
Baccalaureate service 10:30 a.m.; Commencement, 1:30 p.m.

May

For more information on events, visit www.schreiner.edu/calendar.

Unless otherwise stated, all events are free and open to the public. For more information, call Amy Armstrong at 830-792-7405.

Graduates

2007 Summer

- Jocelyn Dudney
- Crystal Duffield
- Teresa Gonzalez
- Elizabeth Hudson
- Shawn Joseph
- Kelly McGrody
- April McComack Morris
- Jeffrey Nathan Rector
- Michelle Marie Rosenthal
- Therese Schwarz
- Martha Simone
- Sandra D. Smith
- Stacy Speedlin

2007 December

- Kassandra Lee Barlow
- Wesley Blankman
- Symmantha Booth
- Elaina Briggs
- Priscilla Brodbeck
- Stephanie Kay Caron
- Travis Curd
- Nathaniel Dommert
- Sean Donnelly
- Kristin Ebner
- Roger Abraham Garcia
- Kelsey Hanson
- Roxie Harper
- Tanya Jo Hensley
- Joshua Horn
- Hermilla Ibarra
- Benjamin S. Johnson
- Delia J. Locher
- Ashley Lormand
- Elizabeth Mendiola
- Allison Cherie Mumme
- Kara Newberry
- Matthew Reece
- Taylor Scogin
- Cody Russell Sobolak
- Charvy Tork
- Edward Charles Turet
- Andrew P. Hyfte
- Luke Whitmire
- Jeanne Wilmot
- Aaron Yates

We are committed...

to keeping you informed about Schreiner’s people and programs while being a good steward of the University’s resources. To that end, we ask that you help by sending us your e-mail address so that we can spend less on paper, printing and postage, and more on delivering a high quality Schreiner education to present and future generations of students. Just e-mail MAWilton@schreiner.edu. Thank you.

IS Available Online

If you would like to change your Inside Schreiner subscription from snail mail to online delivery, please send an e-mail requesting the change to: MAWilton@schreiner.edu

New Faces in Athletic Department

Schreiner University's athletic department has added three new coaches to its roster this semester, two for women's sports and one for men's.

Wayne Hinkley, former head coach for the Boerne High School girls' soccer team, was named to head up Schreiner's women's soccer. Hinkley was one of three coaches nominated for Coach of the Year in Region IV. He has 30 years experience as both player and coach, including playing for the Detroit Rockers of the National Professional Soccer League. He also is a Schreiner alumnus, having graduated in 2003 as a history major. He is married to Sheridan Sloan; they live with their son in Pipe Creek.

The Schreiner cross-country program has also added new head coaches. **Dr. Juan Gonzales**, associate professor of exercise science, heads up the women's program; **Dorsey Jack Reirdon** takes over the men's.

Gonzales has worked very successfully with female runners for much of his career, and is a Certified Strength and Conditioning Specialist, (National Strength and Conditioning Association), Level I Triathlon Coach (USA Triathlon), and a Level I Track and Field Coach, (US Track and Field). He has also made presentations to the American College of Sports Medicine and the National Strength and Conditioning Association about performance enhancement for the female athlete.

Reirdon has more than 40 years experience coaching track and field and cross-country at colleges and high schools, including head coach positions at Oklahoma State University, McNeese State University and the University of Central Oklahoma. He took his high school teams to state championships five times, was named coach of the year more than once. He was inducted into the Oklahoma State Coaches Hall of Fame in 1990.

Schreiner Athletics

Men's Basketball—New SU head coach Drew Miller and his young team are quickly changing perceptions in the American Southwest Conference. The Mountaineers are currently 3-6 overall and 3-3 and tied for third place in the ASC West after being picked dead last in the ASC in the preseason poll. Schreiner men's basketball is also coming off its most impressive win in years—a 67-62 win over national power (and preseason top-20 ranked) Mississippi College in Kerrville January 5. The balanced Mountaineers' attack is led by senior Ronnie Barney at just over 12 points per game (and 4.3 rebounds) and sophomore Keith Perry at nearly 10.5 ppg. Schreiner is first in the conference in rebounding defense, second in the ASC in free throw percentage and fifth in scoring defense.

Women's Basketball—Schreiner is 3-7 overall and 2-4 in the ASC. Third-year coach Jeanette McKinney's team has struggled with injuries and illness so far in 2007-08 but has still been highly competitive and could easily have two more wins on its résumé. Junior Monica Enriquez continues to put up All-ASC numbers in leading SU, with team highs in scoring (18 points/game), rebounds (5.3), assists (4) and steals (4.3). Her steals average leads the conference. Sophomore Courtney Davis is second on the team in scoring at 14.5 ppg and freshman Anna Fareed averages just under 10 points each contest. SU leads the ASC in free throw shooting and is fifth in 3-point shooting.

Previews

Baseball—Head coach Joe Castillo's team is coming off a 19-21 season in '07 and although the team graduated several of its players, they are returning with a solid nucleus, particularly on the pitching staff. Players returning to key positions include outfielders Richard Sanchez (junior, .307 batting average) and Eric Crenwelge (sophomore, .281) and junior infielders Ray Martinez (.272) and Johnny Huizar (.274). The pitching staff will be anchored by 2007 ASC freshman pitcher of the year Colton Hermes (7-3 record in '07). There will be little drop-off among the other starters, as Kevin Jones (senior, 4-5),

Chris Armijo (junior, 3-2), Bernard Pena (senior, 1-3) and Eric Wehmeyer (sophomore, 2-4) have all shown they can be highly successful pitchers. There will also be a wealth of talented freshmen players who should compete for starting spots and will push the more experienced players.

Men's Tennis—The Mountaineers will be hard pressed to maintain the success the team has enjoyed the past several seasons as the team will have several question marks this spring. Sophomore Carlo Sasam should take over for his older brother, Christian, who has played in the #1 singles spot most of the past two seasons. Seniors Brent Coleman and Riley Winterringer will push Sasam and also give the team experience and depth at the top of the lineup. The team will depend upon sophomore Ben Jackson, and freshmen Daniel Okland and Adam Dobbins to provide wins both in singles and doubles to succeed in 2008.

Women's Tennis—Schreiner will have the tall order of having to compete with a squad that is less than full strength again this year. At this time, SU has only four eligible players for the spring—led by sophomore Katrina Priess, who will again play #1 singles. Junior Stephanie Reed had a solid first year with SU Women's Tennis in '07 and will be counted on at #2 singles and possibly to team with Priess at #1 doubles. Freshman Michelle Martinez should play a big role and might also team with Priess at #1 doubles and should play #3 singles. Senior Tina Philippi will be counted on to lead both on and off the court.

Men's Golf—Schreiner lost two of its top players after the fall semester ended so the team will need to count on several members of its nationally-ranked (#7) freshmen class if the

continued on page 6

For schedules and more athletic news, visit
<http://athletics.schreiner.edu>.

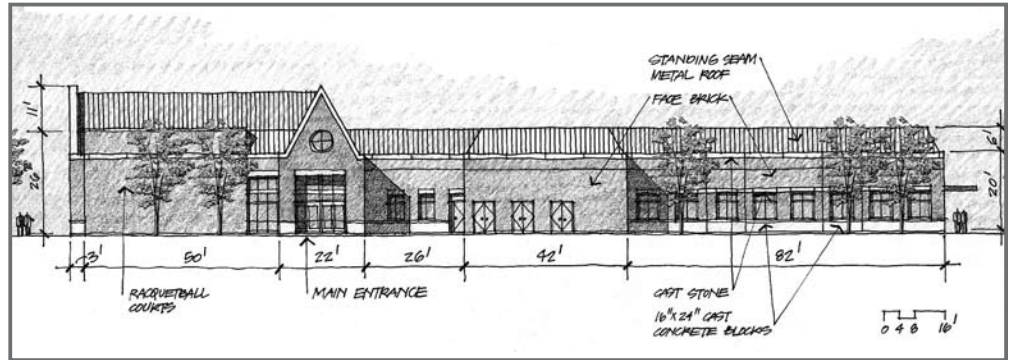
Whole lot of building going on

Spring always brings a flurry of activity to the Schreiner University campus. This year some of it will involve a lot of heavy machinery, as the University breaks ground on two major building projects at the same time. Construction is expected to start on phase one of The Mountaineer Center for Recreation and Athletics and on a new freshman residence facility in April.

The new residence hall will have 216 beds and plans are to have it ready for occupancy by the end of the 2009 academic year. Schreiner's student body continues to grow, which means more space is needed for students. The Oaks, an on-campus apartment complex for students in their sophomore through senior years, opened in the fall of 2007.

"We have been pleased at Schreiner's enrollment growth in recent years, and doubly so because of the growth in residential students," Dr. Tim Summerlin, president of Schreiner University, said. "More students on campus means more activity and a richer campus life. And growth means we will be constructing our first new freshman residence hall in nearly 20 years. With this new facility we will not only be able to house many more students in comfortable, attractive quarters, but we will also enrich the experience of all our freshman students and provide a building of great beauty as well as usefulness."

A 2009 opening is also planned for the Mountaineer Center's first of three building phases. Phase one includes a fitness and wellness facility, improvements to the existing Edington Gymnasium, redoing the tennis courts and extensive landscaping to make the complex look more cohesive with campus architecture. The estimated cost for phase one is almost \$9 million including a facilities maintenance endowment. Future phases will include a new gym and event center, and improvements to all the outdoor intercollegiate athletic facilities.



Summerlin, recently announced that the school received a \$1.3 million challenge grant from the J.E. and L.E. Mabee Foundation of Tulsa, Oklahoma, in support of the Mountaineer Center facilities maintenance and improvement projects. The Mabee Foundation was established in 1948 by John E. Mabee and his wife, Lottie E. Mabee, and provides grants to schools, organizations and churches in Texas, Arkansas, Kansas, Missouri, New Mexico and Oklahoma. Schreiner has one year to raise matching funds to meet the Mabee Foundation challenge.

Schreiner has one year to raise matching funds to meet the Mabee Foundation challenge but is working hard to meet the challenge early in the year. Mark Tuschak, vice president for advancement said, "We would like to fulfill the challenge as soon as possible so we can begin the projects. We can break ground 30 days after the challenge is met."

"In recent years," Summerlin said, "with the generous help of trustees, alumni and other friends we have been able to transform our physical plant. The results include academic buildings, student life facilities, residence halls and other critical facilities essential to our mission.

"What we have lacked—and what our students have often reminded us we lacked—are facilities to serve their needs in developing healthy lifelong habits as well as in supporting a quality athletic program. The Mountaineer Center will change all of that."

Athletics continued from page 5

team intends to build on its success this past fall. While the team will be very young and a little undermanned for the spring, it did have a solid fall season. Also, the squad is very balanced and each of the young Mountaineers could post the low score for the team in any given round. Freshmen Jay Chapman and Jake Torres, and sophomore Kyle Grona all posted sub-.78 averages for the fall and fellow-freshman Stephen Bell was the only player to qualify for each fall tournament.

Women's Golf—SU is the youngest team in the ASC, but showed again last fall that it has some of the ASC's top young talent. Schreiner freshmen Liz Calderon and Kattie Spencer ranked #6 in NCAA Division III for scoring average in the fall season. Those two—combined with sophomore Surraya Minhas (first team All-ASC as a freshman in '07)—make up one of the ASC's top threesomes but will need to build on their fall seasons

to get All-Conference recognition in '08. Sophomore Andrea Roach continues to be the heart of the team and improved greatly this past fall.

Softball—Coach Don Green starts his second season at the helm of SU softball and he and his team have high expectations this season, despite having to rely on a host of young players. Top returning players are senior Megan Eichman (.309 average, led team in hits and stolen bases in '07) and junior Lyndsie Travis (.326 avg., led team with 5 HR, 25 RBI in '07). On the mound, Schreiner will count on two new players to carry the load this spring. Sophomore transfer Patsy Toman and freshman Becca Hay both come in with solid credentials and should significantly improve the starting pitching. Behind the plate, freshman Marla Jendrusch has made a strong impression in fall practices and should contribute right away.

HONOR ROLL OF DONORS

Donors have always played a vital role in helping Schreiner University provide a first-rate education for our students. From Charles Schreiner's donations of land and endowment in 1917 to establish Schreiner Institute, to the Cailloux family's generosity that built our latest academic building, Kathleen Cox Cailloux Hall, the history of Schreiner University is a story of philanthropy and generous supporters. In these pages we salute you—you who supported the Hill Country College Fund, sponsored a student, provided funds for student scholarships, supported Campus Ministry or the Learning Support Services program, or made a donation to our comprehensive campaign building projects, or any of our many programs or projects on campus from January 1, 2007 to December 31, 2007. Thank you!

Mountaineer Center

Sandra and James Alsup
Nancy Anguish
Nancy and Cecil Atkission
Estela and Jim Avery
Teeka and Pete Baldwin
Patricia Barnhill
Lane Barrington
Nelwyn and Walter Belt
Susan and Randy Brooks
Judy and Charles Browning
Kennon and James Brunkenhoefer
Marilyn and Herman Buchholtz
The Cailloux Foundation
Camp Verde General Store
Patti Castellow
Laverne and Fred Chovanetz
Community Foundation of the Texas Hill Country
Frances Cree
Anne and Rick Cree
Priscilla and Gary Crozier
Anita and Robert De Kock
Ronnie Denker
Cynthia and Ruben Diaz de Leon
Carol Jean and Walter Dunlap
Nancy and Leon Ertler
Linda and David Evans
Judy and Warren Ferguson
Martha and †Joe Foy
Sonya and Bill Franklin
Novia and Ross Harris
Carley Hermes
Colton Hermes
Jane and Kyle Hobin
Kristin and Michael Huffman
Barbara and Charley Johnson
Mike and Kathy Johnson
Charlene and Francis Klekar
Ruth and Eugene Koncaba
Ronnie Koncaba
KPMG Foundation
Kathy and Dean Krueger
Laura and Weir Labatt
Carolyn and Kenneth Landrum
Peg Layton and Steve Spahr
Charlene Leopold
Van and Joe Mabee
Mollie and Frank Maresh
Richard Marrs
Sharon and Ronald Mascheck
Mary Jane and Wendell Mayes
Betty and Tom Mobley
Jo and Haskell Monroe
Gloria Olsen
Barbara and Mike Pate
John Pesek
Nelson Puett Estate
Nelson Puett Foundation
Dalene and Robert Reagan
Richard James Cree
Revocable Trust
Angie and Ed Richmond
Stephenie and Randy Roberts
Elinor Ross
Lorraine and Charlie Sapp
SBC Foundation
Shirley and Bob Schmerbeck
Kathryn Schutts

State Farm Insurance
Sue and Jack Steele
Pollyanna and Steve Stephens
Mary Ellen and Tim Summerlin
Wilbert and Marylee Supak
Jeanne and Phil Terrell
Carrie and Charles Torti
Betty Tucker
Dorothy Tucker
Kim and David Ulcak
Nancy and Ed Wallace
Ann and Bill Wilde
Johnny and Elaine Woytek
Phyllis and Bob Young

Captain's Council

Gifts of \$5,000 or above and multiyear pledges
Carol and Baxter Adams
ADCO Advertising Inc.—Kerrville
Sandra and James Alsup
Clarice and Willard Amann
Pat and Jack Anderson
Lynnette and Stephen Anfinson
Nancy Anguish
H.C. Arbuckle III
Arkansas Community Foundation
Gretchen and Keith Asbury
Nancy and Cecil Atkission
Estela and James Avery
Eleanor and Ray Baldwin
Teeka and Peter Baldwin
Nelwyn and Walter Belt
Marion Bergin Estate
Chica Greenlee and Allen Boatwright
Sally and Roger Bobertz
Jennifer and James Bone
Susan and Randy Brooks
Junie Ledbetter and Gaston Broyles
Carolyn and Ken Bruner
The Cailloux Foundation
Kathleen and Floyd Cailloux Estate
Effie and Wofford Cain Foundation
Cecilia Shepherd Cambias Estate
Virginia Ruth Clarke
Carolynn and Stan Cobbs
Francelle and Dennis Collins
Community Foundation of the Texas Hill Country
Shirley and Julian Coskey
Martha and Frank Covert
Frances Cree
Anne and Rick Cree
Richard James Cree
Revocable Trust
Robbie and Harold Crocker
Joanne and Davy Crocker
Arney Davis
Eleanor and †William Dozier
Julie and Frank Dunlap
Sue Dyke
Jeannette Early
Kirsten and Levon Eastin
Tweety and Dick Eastland

Linda and David Evans
ExxonMobil Foundation Inc.
Vinna and Mike Farhoudi
Fasken Foundation
Donna and Royce Faulkner
Judy and Warren Ferguson
Julia Finger
First Presbyterian Church—Bryan
First Presbyterian Church—Kerrville
First Presbyterian Church—Midland
First Presbyterian Church—San Antonio
Michele and Trey Fisher
Alta and Bill Foster
Martha and †Joe Foy
Franklin Family Foundation
Sonya and Bill Franklin
Mignonne and Scott Frantzen
Carolyn and Wally Freeman
Louise and William Furbush
Barbara Gainer
B.K. and Fred Gamble
Victoria and Stephen Goebel
Mary Greer
Rosa May Griffin Foundation
Martha and †C. D. Guin
Gulf-Tex Co. Inc.
Karen Gummersbach
Michael Haifley
George and Mary Josephine Hamman Foundation
Novia and Ross Harris
Carolyn and Houston Harte
Mary and Rufus Hayes
H-E-B
Jane and Kyle Hobin
Jean and Lewis Holekamp
Kristin and Michael Huffman
Elizabeth and Mike Hughes
Humanities Texas
Pat Jackson
James Avery Craftsman, Inc.
Adele and Sam Junkin
JWL-GSW, LTD.
K-Bar Construction
Kerr County Abstract Co. Inc.
Kerrville Daily Times
Karen Davis Kilgore
Robert Knight
Laura and Weir Labatt
Carolyn and Kenneth Landrum
Mike Lanham
Missie and Sam Lanham
Peg Layton and Steve Spahr
John Letz
Sandy and Peter Lewis
Michael Looney
Love Creek Orchards
Van and Joe Mabee
Mollie and Frank Maresh
Annette Marquez
Tricia and Bill Matthews
Mary Jane and Wendell Mayes
Demmie Mayfield
Amy Shelton McNutt
Charitable Trust
Memorial Drive Presbyterian Church

Cheryl and Carl Moore
Marilyn and David Mueller
Linda and Henry Murphy
Maggie and Bill Nation
Northwood Presbyterian Church
Alice and Erle Nye
Gloria Olsen
Me J and John O'Neal
Roxie and Clint Orms
Barbara and Michael Pate
Vaneta and Carl Perkins
Hal and Charlie Peterson Foundation
Lavon and Verne Philips
Kathryn and Robert Porcher Estate
Harriet and Tony Powell
Preston Hollow Presbyterian Church
Masel Quinn
Mary and Karl Ransleben
Tom Ratcliffe
Dalene and Robert Reagan
Louise Reid Foundation
Angie and Ed Richmond
Debbie and Howell Ridout
Stephenie and Randy Roberts
Jerre and Bill Roberts
Sue Robertson
Myra Robinson
Lillian Rogers Estate
Caroline Ross Estate
Elinor Ross
Lorraine and Charlie Sapp
Gayle and Fred Saunders
Barbara and Walter Schellhase
Kathryn Schutts
Serafy Foundation
Viveca and Nicholas Serafy
Barbara and Eldon Sheffer
Jennifer and Stuart Sliva
Mimi and Allen Smith
Sue and Jack Steele
Pollyanna and Steve Stephens
Sterling-Turner Foundation
Carmen and Charles Sullivan
Mary Ellen and Tim Summerlin
Hatton W. Summers Foundation Inc.
Jeanne Sutton
Nancy and Don Swanson
Linda Tarrant
Terminix/ABC Pest Control
Jeanne and Phil Terrell
Texas Independent College Fund
Texas Pioneer Foundation
TG Public Benefit Program
Katherine and Win Thurber
Lois and Jack Thurmond
The Cloyde and Ethel Lee Tracy Foundation Inc.
Trull Foundation
Betty Tucker
Dorothy Tucker
Lisa and David Turner
Shannon and Mark Tuschak
Judith and Graydon Vaught
Anonymous
Nancy and Ed Wallace
Sana and Bob Waller

Pamela and William Weathers
Jean and Thad Weber
June and George Weitz Estate
Welch Foundation
Wells Fargo Banks: Bandera, Comfort, Ingram, Kerrville
Ann and Bill Wilde
Rebecca and Herbert Williamson
Victoria and David Wilson
Gail and Feather Wilson
Debbie and Bert Winston
Jerri and Walter Workman
Judy and Harold Wunsch
Christine Zunker

President's Associates

Gifts of \$1,000—\$4,999
Frances and Bill Allen
American Electric Power Service Corporation
Page Anthony
AT&T Foundation
ATEK Plastics
Gaye and Paul Avery
Bank of America
Bank of The Hills
Darlene and Dewayne Bannister
Margaret Barnhart
Fred Bartlingck Jr.
Anita and Carlton Biermann
Lynn and Theo Blue
Jay Bright
Briscoe Hall
Broadway National Bank
Nancy and John Broocks
Kay and Harold Brumley
Barbara Bruno
Betty and Bill Byrd
Camp Mystic Inc.
Dixie and John Carey
Carolyn and Robert Carlisle
Judy and Jim Cavender
Beth and Eugene Chappell
Charitable Gift Fund
Chevron Matching Gift Program
Loyce and Bill Collenback
Roma and Howard Collins
Conoco Inc.
Crenwelge Motors
Tim Crenwelge
Elizabeth and Bob Cunningham
The Currie Fund
Jim Davis
Linda Delaney
Nancy and Philip Dickinson
Eleanor Dozier
Lucille and Lindsay Duff
Carol Jean and Walter Dunlap
Jodie and Jay Dunnahoo
Early Foundation Inc.
Farber Enterprises Inc.
Mike Farber
Fidelity Abstract & Title Co.
First Presbyterian Church—Ingram
First Presbyterian Church—Kilgore
Francisco's

HONOR ROLL OF DONORS

Natalie and Ricky Garcia
 Nancy and Dan Garrison
 Susan and James Garrison
 Sara and Armando Garza
 Diane and Bob Green
 Sandra and Gerry Griffin
 Edith and Gaston Hallam
 Foundation No 2
 Carol Hasserd
 Therese Henderson
 Deedie and Phillip Hering
 Evelyn and Mike Hickey
 Highland Park Presbyterian
 Church
 Highland Park Presbyterian
 Women
 Hill Country State Bank
 Hill Country Telephone
 Co-op Inc.
 Richard Hosler Estate
 Kay Hudler
 Huser Construction Company
 Shawna and Steve Huser
 Johnson Controls Foundation
 Edith and James Johnson
 Bonnie and J.E. Johnson
 Elise and Russ Joseph
 Patty and Bill Kendrick
 Kerrville Host Lions Club
 Kerrville South Water
 Company Inc.
 Ginger and Earl Kilgore
 Beverly and Henry Kitzman
 Nancy and Tom Koger
 KPMG Foundation
 La Hacienda Treatment Center
 Laura and Bill Laing
 Ann and Jim Laughlin
 Jane and Bill Lemoine
 Beth and Brance Lewis
 Ruth and Harvey Lindner
 Delores and Dewey Livingston
 Kay and Flynn Long
 Massey Itchner & Co. PC
 Jim Matthews
 Martha and H.D. Maxwell
 Becky and Nowlin McBryde
 Alleen and Bill Meinecke
 Merrill Lynch & Co.
 Foundation Inc.
 Jan and Earl Merritt
 Ada Jo and Mac Merwin
 Steve Mettner
 Mr. and Mrs. Robert Meyers Sr.
 Peggy and †Gordon Monroe
 Anne Moore
 Joanne and Jim Mosley
 Nationwide Insurance
 Joe Cook Agency
 Joan and Chester Nowak
 Lea and Kyle Nye
 Kathleen Ocker
 Anonymous
 Kerr County Optimist Club
 Sylvia and Dan Ostos
 Panhandle-Plains Student
 Finance Corporation
 Vicky and Harris Pappas
 Dodo and Clyde Parker
 Jeanetta and Malcom Payne
 Rae and Jimmie Peschel
 Pfizer Foundation Matching
 Gifts Program
 The Coin B. Frederick and
 Erin Frederick Powers Trust
 Elise and Bill Reid
 Rice Interests Ltd.
 Travis and Dorothy Richardson
 Esthermae and David Rooke
 Rotary Club of Kerrville
 Lois and Jim Rupke

San Pedro Presbyterian Church
 Midge and Clyde Saunders
 Shirley and Bob Schmerbeck
 Rolinda and Arthur Schmidt
 Elaine Scogin
 Neel and Robert Scott
 Julia and Peter Shaddock
 Ralph and Shirley Shapiro Fund
 Sheftall's Jewelers
 Smith Creek Ranch
 Sandra and J. Fort Smith
 Martha and John South
 Sandy Speed
 State Farm Insurance
 Stuart-Griffin-Perlitz
 Foundation
 Cynthia and Brian Sullivan
 Blythe and Bill Thomas
 Carrie and Charles Torti
 Tucker Foundation
 Unitarian Universalist
 Fellowship
 Kathy and Adrian Van Dyke
 Catherine Wahrmond
 Betty and Jack Walcher
 Marie and Wayne Warren
 Bill Webb
 Wells Fargo Bank Matching
 Gift Center
 Linda and Kit Werlein
 Jeanne and George West
 Ruth Whitehurst
 Amanda and David Williams
 Marion and Bill Wilson
 Windstream
 Johnny Winslow
 Marianne Wofford
 Mary Louise and Oliver Wood
 Sue and Jim Woods
 Phyllis and Bob Young

Mountaineer Club

Gifts of \$500—\$999
 Traci and Daron Allen
 Jene and Jackson Babb
 Anna Baker
 Jeanette Ball-Reyes
 Joyce and Bob Barton
 Lea and Arthur Bell
 Verna and Joe Benham
 Ann and Ed Berrio
 Bethel Presbyterian Church—
 West Columbia
 Barbara and James Brooks
 Mary and Charles Campbell
 Carole and Bob Carlson
 Patti Castellow
 Elizabeth and Steve Cofoid
 Commercial Realty Services
 Communities Foundation
 of Texas
 Joe Cook
 Lela and David Crockett
 Janet and Harlan Crouse
 Verna Mae Crutchfield
 Peggy and Tom Currie
 Beverly and Ralph Daugherty
 Davidson, Freedle,
 Espenhover & Overby PC
 Rachel and Clyde Day
 Rachel and James Deer
 Cynthia and Ruben Diaz de Leon
 Gloria and Don Dorsey
 Mary Margaret and Glen Doyen
 First Presbyterian Church—
 Junction
 First Presbyterian Church—
 Longview
 Pam and Danny Flores
 Donna and Logan Garrett
 Ann Gibbs

Zaira and Andres Gutierrez
 Tricia and Jarrod Hamil
 Kim and Mike Henry
 Cara and Bruce Herlin
 Tracy and Harvey Hilderbran
 Julianne and Bill Hoegemeyer
 Patsy and Roy Holloway
 Mary and Robert Hughes
 Kit and Mike Hunter
 Bobbye and Barlow Irvin
 Randle and Dorinda Jennings
 Amy Johnson
 Priscilla Johnson
 Priscilla and Gregg Johnson
 Ellen and John Kammerdiener
 Patsy and Kenneth Kaye
 Carole and Fred Kelly
 Ken Stoepel Ford Inc.
 Kerr County Women's
 Chamber Inc.
 James King
 Jane and John Koonsman
 Kathy and Dean Krueger
 Jane and Lee Larkin
 Sue and Doug Maclay
 Anna and Ron Macosko
 Ann and Gene Marshall
 Elizabeth and Philip Masquelette
 Bobbie and Sam May
 Patty and Miles McGrane
 Cora and Bob Miller
 Betty and Tom Mobley
 Annemarie and Earnest Mudd
 Nationwide Matching
 Education Gift Program
 Lala and Vic Niemeyer
 Emily and David Peeples
 Holly and Rick Perry
 Presbyterian Church (USA)
 Alice and Ronald Rivers
 Karen and Heinz Roesch
 Nancy and Robert Rooke
 Roy Sanchez
 Nelda and Mark Scharringhausen
 Gerry and Frank Seaman
 Oscar Seth
 Susan and Charles Slaughter
 Diane and Ricky Smith
 Jill and John Smith
 Annette and Larry Sondock
 Lois and Dan Sowards
 St. Mark Presbyterian Church
 Teri and George Stieren
 La Nell and Dick Swantner
 Sue Tiemann
 Marcia and Maurice Tinsley
 Marie and Edmunds Travis
 Debbie and James Vasquez
 Monica and Brick Whitehurst
 Leroy Wiese
 Billy Wilkinson and
 John Kerrigan
 Harry Wright
 Ken Zschappel
 Tracy and Barry Zuercher

Maroon & White Club

Gifts of \$250—\$499
 Advance Hydrocarbon
 Corporation
 Diane and Aaron Arnold
 Moira Attwell
 Georgia and Dan Bacon
 Alice and Norris Barry
 Mae Louise and Ed Baskin
 Sam and Dayton Baublitt
 Bob Boeker
 Debby and J.D. Bowen
 Jan and Bob Bowmer
 Pamela and Ray Brach
 Gene Brinson

Margaret and Ollie Brown
 Pat and Tom Browne
 Charlotte Brundrett
 Ruth and Robert Brunk
 Merri and Dick Bundy
 Pamela Burch
 Helen and John Casbergue
 Peter Cawthon
 Betty and Jim Chaney
 Church's Fried Chicken
 Patricia and John Clark
 Clarlyle Carpet & Paint
 Diana and Anthony Comuzzie
 Patti and Rick Coughlin
 Hazel and Joe Coughran
 Pamela and William Crumrine
 Charlotte and Tom Daniels
 Brenda and Hugh Davis
 Deborah and Dick Dobie
 Janis and Charles Feazel
 Cindy and Daniel Feeback
 Jo Ann and Luis Flores
 Norma and Stanley Foskett
 Barbara and Thomas Foster
 Freeman Energy Inc.
 Sherry Freeman
 Arlene Gaitan
 Alice and Peter Garcia
 Deborah and Ronald Gerth
 Golf Cars & Care
 Deborah and Juan Gonzalez
 Helen Green
 Marilyn and Guy Guffee
 Mildred Guin
 Johnnie and Raymond Hargrove
 Frances Hatch
 Patricia and John Hays
 Susan and Joe Heffington
 Janice and C.E. Hendrix
 Carolyn and Joe Herring
 Meg and John Huddleston
 Kristine and Chester Hurst
 Donna and David Jackson
 Jenzabar Inc.
 John Calvin Presbyterian Church
 Red and Patricia Johnson
 Nancy and Dick Junkin
 Khoury Automotive Group Inc.
 Jennifer King
 The Lakehouse Restaurant Inc.
 Jenny and Ric Leggett
 Heather Logan
 Russell Long
 Rhonda and Clay Lowenfield
 Evelyn and Don Luckemeyer
 Marge Lundeen
 Linda and Dwaine Machann
 Jim McCall
 Brooks and Mitchell McCorcle
 Jay McElroy
 Brenda and John Miller
 Susie and Jim Morgan
 Janet and Charles Morris
 Motion Machinery LTD
 Marilyn Moye
 Nancy and Robb Muil
 Lenore and Ken Murray
 Liz and Pat Murray
 Laura and Edward Myrick
 Wanda and Roy Oden
 Dot and Bill O'Neal
 Elaine and Sonny Payne
 LaRue and Brian Perkins
 Ida and Gary Pogue
 Jane and Don Priour
 Tamara and Darrell Probst
 Jane and Dick Ragsdale
 Kathy and Si Ragsdale
 Rails...a Cafe at the Depot
 Patsy and Tom Robb
 Clayton and Kimberly Roberts

Anita and J. Rollo
 San Antonio Area Foundation
 Marium Schmerbeck
 Laura and Greg Shrader
 Jill and Peter Smetek
 Anne and Paul Smith
 St. Mary's School
 Minnie and Edward Takahashi
 Sam Taylor
 Time Warner Cable
 Beverly and Vernon Ullmann
 David Wampler
 Caroly and Danny Wheat
 Whelan Plumbing Co. Inc.
 Marilyn and Gene White
 Anonymous
 Craig Zemmin

Century Circle

Gifts of \$100—\$249
 A-1 Transmissions
 A3 Studio
 Wynell and Quentin Aaberg
 Ione and James Adams
 Darleen Allan
 Bud Amburn
 Denise and Gordon Ames
 Anita Anderson
 Bruce and Mary Anderson
 Liz and Joe Arp
 Linda and Mac Ashworth
 Vivian and Gene Atkinson
 Robin and Michael Atteberry
 Beverly and Bob Avery
 Bennie and Elbert Babb
 Michael Babb
 Karen and Steve Backor
 Baehre Real Estate
 Denise and Russell Baehre
 Debbie Baerwald
 Ilse and Al Bailey
 Baker Hughes Foundation
 Kathy and Conner Baldwin
 Margaret and Billy Balthrop
 Louise Barbee
 Patricia and Eric Barefield
 Mr. and Mrs. Robert Barlow
 William Barnhart
 Patricia Barnhill
 Lane Barrington
 Heidi and Charles Baskin
 Martha and Bill Bass
 Baublitt Jewelers
 Michael M Baumann and Co.
 Mike Baumann
 Tonya and Matthew Baumbach
 Lois and Edward Bayer
 Mark Benak
 Candyce and Bruce Beneke
 Carolyn and Tarilton Benton
 John Berchelmann
 Anne Berre
 Sally and Raymond Berry
 Better Consumer Choices LLC
 Kathleen and Wynn Betty
 Barbara and Keith Bicker
 Anonymous
 Betty and Jack Bills
 Lonnie and Virginia Birch
 Deana and Bill Blackburn
 Debbie and Robert Blackwell
 Body Mechanics
 Charlene and Pat Bolden
 Bethany and Chris Borak
 Marianne and Bob Bowers
 Gloria and Malcolm Boyd
 Mary and Chester Bradley
 Jane and Daniel Brandenstein
 Patricia and Paul Brennan
 Alice Brook
 Natalie and Cody Brown

HONOR ROLL OF DONORS

Scooter and Spencer Brown
 Mr. and Mrs. Tom Browning
 Bryan Finley and Associates
 Heather Bryant
 Debbie and Caleb Burress
 Suzanne Butler
 Dick Cable
 James and Leslie Cameron
 Camp La Junta
 Camp Stewart for Boys Inc.
 Mary Lyne and Derek Campbell
 Mary and Rene Canales
 Julie and Jack Cannaday
 Karin and Richy Carpenter
 Cecil Atkisson Motors
 Howard Chamberlain
 Brenda Chapman
 Susan and J.M. Chastain
 Steve Clack
 Peggy Clanton
 Clifford Clegg
 Nancy and Jack Cockrill
 Margie Cole
 Marge and Albert Coleman
 Teresa and Glenn Coleman
 Jude and Clint Coles
 Elynn and Oran Collier
 Thomas Colwell
 Mildred and Edwin Cook
 Cowboy Steak House
 Joan and Thomas Craft
 Phillip and Pamela Craven
 Debbie and Jerry Crawford
 Coralie Croom
 Kat Culpepper
 Alicia and Louque Currie
 Sharon and Bruce Curry
 Gretchen and Bob D'Amore
 Harold Danford
 Amy and Steve Daniels
 Carolyn and Henry Darden
 Davis Bonding Co.
 Margery and Carl Davis
 Frances Davis
 Val and Douglas Day
 Ramon De Leon
 San Juana and Cleofas De Luna
 David Devine
 Carolyn and John Dickerson
 Wanda Dobie
 Dominion Foundation
 Karen and John Dooley
 Marcy and Wes Dorman
 Mr. and Mrs. Lenard Dossey
 Judith and Rogers Douglas
 Charlotte Douglass
 Vic Douglass
 Jana and Stephen Drane
 Peggy Dunbar Graham
 Geraldine and Joe Durso
 Anonymous
 Marci and Joseph Ecker
 Elizabeth and Don Eddy
 Deborah and Carlton Edwards
 Kay and Troy Edwards
 Anonymous
 Eleanor and Pat Ellebracht
 Donna and David Ellis
 Carole Errett
 Wayne Esté
 Judith and George Eychner
 Bob Fairchild
 Jennifer and Kamron Farhoudi
 Susan and Bob Fendley
 Frank Ferrigno
 Peggy and Keith Ferris
 Casey and Joseph Filippone
 Gordon Findlay
 Curtis Finley
 First Presbyterian Church—
 Livingston

First Presbyterian Church—
 Uvalde
 Ruth and Lee First
 Mary and Doug Fleming
 Theodore Floc
 Larry Ford
 Evelyn and Ed Fox
 Elaine Franklin
 Lynn and Charles Freeman
 Becky and Larry Freeman
 Mary and James Froelich
 Brenda and J.D. Fudge
 Loraine and Percy Galbreath
 Michael Galvan
 Ms. Karen A. Gebhardt
 Gibson Discount Center
 Dusty Gilliam
 Beverly and David Gish
 Joan and Gary Goebel
 Priscilla Goehring
 Golden Eagle Landscape Co.
 Gold's Body Shop Inc.
 Susan and Roy Goodwin
 Pat and William Gordon
 Mark Graff
 Diana Grant
 Pat and James Green
 Claire and Joe Gregorcyk
 Darcee Grice
 Mary Lou Grier
 Charles Grona
 Dianne Grona
 Vanessa and Mario Guevara
 Cassity and Abel Gutierrez
 Lisa and Richard Guzman
 Jean and Earl Hale
 Mr. and Mrs. Michael Hannasch
 Joyce Hansen
 Michele and Shaun Hardimon
 Yvonne and David Harkness
 Carol and Thomas Harper
 Charlotte and Roy Harrell
 Wanda and Richard Harrison
 Pat Harte
 Audrey and Don Harvey
 Heart O' The Hills Girls Camp
 Margaret and Dale Hedrick
 Bill Hellen
 Anne Henneke
 Denise and Fred Henneke
 Cathy Henry
 Herbert and Eva Henry
 Helen and James Herget
 Carley Hermes
 Colton Hermes
 Janet and John Hershner
 Hi-Bridge Gastroenterology
 Medical Group Inc.
 Michelle Hickman
 Donna and T. A. Hillin
 Angela and Matthew Hoermann
 Herbert Holchak
 Lynne and Michael Hollern
 Liz and Michael Hollis
 Galina and George Hopkins
 Carole and Howard Hovde
 Ralph Howard
 Sheryl Howard
 Sheila and William Howard
 Katherine and Brian Howe-Frilot
 Michele and Michael Hozman
 Irmtraut and Paul Hruschka
 Peter Huey
 Mr. and Mrs. Paul Hulse
 Judy and John Hutcherson
 Sandra and Richard Igau
 Trey Iverson
 David Jackson
 Greg Jaeger
 Lindsey Jaeger
 Pam and Charles Jenkins

Betty and Andrew Johnson
 Sara and Bob Johnston
 Suzanne and Chucker Jones
 Marilyn and Donald Jones
 Jennifer and Ed Junker
 Don Beth and Fred Junkin
 Robbie and Glenn Jurek
 Donna Keeling
 Ben Kelly
 Mary and Charles Kendrick
 Kerr County Federal
 Credit Union
 Kerrville Automatic Auto
 Repair Center
 Margaret and Gary Kersey
 Pam King
 Addie Klewer
 Monte and Alan Klossen
 Gerrie and Robert Knoll
 Mary Anne and Alfred Koebig
 Katherine and Gearl Koonce
 Billie and Dan Krausse
 Sandra and Chris Langley
 Mr. and Mrs. Robert Lannom
 Diane and Phil Latham
 Mary and Walter Lee
 Michelle Leija
 Sandra and Chuck Leinweber
 Lynda and Craig Leslie
 Lou and Bill Lewis
 Margaret and Bart Little
 Katherine and James Lockart
 Joel Locke
 Lockheed Martin Corporation
 Dr. and Mrs. Jose Lopez
 Laurie and Scott Loveland
 Laurie and Mike Lowe
 Courtney Lutz
 Eloise Mahaffey
 Marcia Manhart
 Robert Mansker
 Patricia and Robert Markell
 Carolyn and Everett Marley
 Elizabeth and Echol Marshall
 Rhonda and T. Roy Martin
 Theresa and Gabriel Martinez
 Takeshi Matsumoto
 Sue and Bob Maxon
 Rebecca McCall
 Jennie and Harry McCament
 Sally and Donald McClure
 Joyce and Luke McDaniel
 Gus McFarland
 Jim McHargue
 Don McIlyar
 Dawn and Rob McMillan
 Joyce Mechler
 Shirley Meckley
 Carrie and Andy Mein
 Memorial Presbyterian
 Church
 Joyce and Paul Mercer
 MG Building Materials
 Cindy and Ben Miller
 Ida and Tom Miller
 Gail Mitchell
 Mary and Kerr Mitchell
 Nina Moller
 Jane and Scott Monroe
 Faye and Bill Montgomery
 Marilyn and Otis Moore
 Mr. and Mrs. Kenneth Moore
 Brenda and Randy Moran
 Sonia and Jeff Munoz-Gill
 Marie Murnane
 Mr. and Mrs. Murray
 Garrett Mynatt
 Alexis and Alan Nitchman
 Ann Nixon
 Lawrie Nomer
 Gini and Wes Norris-Lane

Carolyn and Bob Northcutt
 Ignacio and Eloisa Nuanes
 Nancy and Richard O'Campo
 Mish Ochu
 Don Oehler
 Patrick O'Fiel
 Dr. and Mrs. Kees Oldenbroek
 Kay and BJ Palmer
 Harold Palmer
 Bessie and John Pechacek
 Betty and Ralph Pelton
 Patty and Paul Pennell
 Sophie Perez
 Shelby and Scott Peschel
 Pamela and Todd Peter
 Terry and Bill Peterrek
 Emily and Bill Petty
 Phi Delta Theta Texas Sigma
 Rose and Richard Phillips
 Pines Presbyterian Church—
 Houston
 Pioneer Moving Company
 Ed and Sharon Pollard
 John Potts
 Precisionfit Golf
 Mildred and Holt Priddy
 Ruth Priest
 Helen and Charles Probst
 Diane and John Pruessner
 Carolyn and Tom Pruett
 Judy and Charles Quereau
 R.C. McBryde Oil Company
 Scott Rain
 Bertha and Jorge Ramirez
 Ms. Randolph Randolph
 Deborah and Dan Rayfield
 Hazel and William Reece
 Katie and Michael Reed
 Joseph Reeh
 Delie and Mike Reid
 Betsy and Alton Rhoden
 Cheryl and John Rich
 Greg Richards
 Marie Richardson
 Hazel Richmond
 Willard Richter
 Tommie and Charles Ridgaway
 Calvin and Roseann Riley
 Darla and Charles Ripley
 Rosemarie and H. L. Risinger
 Riverhill Women's Association
 John Roberts
 Cristina Rodriguez
 Gilda and Rogelio Rodriguez
 Ilene and Walter Roemer
 Nancee Rush
 Donna and Aubert Ruth
 Lisa and Wayne Rux
 Denise and James Salter
 San Antonio CPA C.E.
 Foundation
 Oralia and Alfred Sanchez
 Patia Sandifer
 Cyndy and Charles Sanford
 Lydia Schaefer
 Nan Schiavo
 Terry and Steve Schiurring
 Elizabeth Schmidt
 Corey Schneider
 Melissa and Richard Schneider
 Joyce and Charley Schupp
 Maria and Thomas Schwennesen
 Lo-Rena and Kelly Scott
 Robert Scripps
 Gail and Eddie Sears
 Anne and David Seidensticker
 Mary and Herb Sentesi
 Phyllis and Peter Shaddock
 Susan and Jerry Shaw
 Nancy and Milton Shaw
 Mary Frances Sherlock

Shoelab
 Maxine Short
 The Shutter Factory Inc.
 Mac Siebenthal
 Tracy and Gary Simon
 Jeffery and Eadye Simpson
 Marvin Singleton
 Dorothy Sippy
 John Sisson
 Sharon and Fred Skaggs
 Sylvia and Sidney Skinner
 Marlyss and Walter Skipwith
 Suzy Sledge
 Inky and Gene Smith
 Charlene and Thomas Smith
 Mr. and Mrs. James Sorrells
 John and Dorede Speaker
 Jeanne and Philip Stacy
 Fay Stafford
 Pat Chastain and Fred Stevens
 Frances and Jack Stevens
 Marilyn and Don Stewart
 Susan and James Stinson
 Mildred and Arthur Strickland
 Dick Swayze
 Eva Sweeney
 Keiko and Michael Sykos
 Lane Tait
 Ralph Tate
 Ann Taylor
 Harrison Taylor
 Rhonda and Billy Taylor
 Bill Taylor
 Elaine and Tom Terrell
 Texas Instruments Foundation
 The Tyler Paper
 The Williams Companies Inc.
 Billie and Gil Thomas
 Irene Thomas
 Charlotte Thompson
 Melanie and Roy Thompson
 Blu Thornton
 Frances and Maurice Tipton
 Ardyce and Jerry Tobin
 Mr. and Mrs. Jake Tortorice
 Jean and David Tritenbach
 Joyce and Walter Troegel
 Margaret Van Landingham
 Jeanette and Gary Vaughan
 Vision Source
 Rick Wahrmond
 Carol and James Walls
 Emily and James Ware
 Beverly Watson
 Michelle and Arthur Wavell
 Wayne Rux DDS
 Michael Weberpal
 Lois and Thomas Webster
 Michael and Mary Weed
 Darrell Weidenfeller
 Wenchem Inc.
 Mindy and Raymond Wendele
 Patricia and Wylie Westberry
 Olin Whitescarver
 Duane Whitlow
 Phyllis Whittington
 Debbie and Bob Wiggins
 Shirley and William Wiley
 Atta and Bill Wilhelm
 Brenda and Bryant Williams
 Jarrell Williams
 Debbie and Keith Williams
 Skipper and E.C. Willmann
 Wilson Family Chiropractic
 Kim Wilson
 Wanda and Milton Wilson
 Elizabeth and Reginald Wilson
 Patrice and John Wilton
 Ellen and Don Winspear
 Wisconsin Energy Corporation
 Foundation Inc.

HONOR ROLL OF DONORS

Betty Wolfenson
Tina and John Woods
Y O Ranch Resort Hotel

Friends of the University

Gifts of \$1—\$99

Richard and Sharon
Abercrombie
Rosa Linda and Brad Adami
Gayla Adams
Jonathan Adams
Sheena Adams
Ashley and David Aldridge
Gloria Algeo
Gaitrel and Mark Andrews
Walter Ard
Susan Arizona
Ark Veterinary Hospital
Amy and Mark Armstrong
Patricia and James Armstrong
Yvonne and Jimmy Arreaga
Armen Babajanian
Emma Bailard
Holly and Chad Baker
Margaret and James Baker
Sarah and Howard Baker
Stephanie and Michael
Balderrama
Felicia and Tom Baldwin
Mary and Frank Ball
Kathy and Charles Balsler
Helen Bandy
Joann and Gerard Barela
Elaine and Clyde Barlow
Kassie Barlow
Mr. and Mrs. Ronnie Barney
Denise and Stanley Barron
Ivette and Enricue Bascues
Brenda Beaty
Cindy Becker
Jean and Dean Bedient
Barbara and Adam Bedwell
June and Samuel Begeman
Belk Department Store
Nena and Juan Jose Benavides
Maria and Gonzalo Benitez
Dianne and James Bernhard
Cathy and Bruce Berryhill
Helen and Richard Bialek
Emily and Carlton Bierschwale
Margaret and Milton Bierschwale
Stefani Binnicker
Jacqueline and Arch Bishop
Maxine Bizer
Candy and Kent Black
John Blackburn
Deborah and Zeno Blevins
Jane Bohls
Geneva Bonner
Sandra and Bud Bonner
Beth and Rex Bourland
John Boyd
George Bozzo
Jim and Linda Bradel
Patte and Ed Braker
Janice and Rusty Brannen
Cynthia and Jeffrey Bregman
Irene and Rudolph Brewster
Sharon and J.I. Bridges
Shannon Briggs
Julie and Trace Brooks
Amy and Charles Brown
Kathy and Austin Brown
Stephanie and Houston Brown
Crystal Brummett
Kennon and James
Brunkenhoefer
Toni Bryant
Gerald and Carmen Bryla
BS&T Service Co. Inc.
Marilyn and Herman Buchholtz

James Bull
Rick and Connie Bull
Michael and Virginia Bullard
Starla and John Burditt
Carolyn and Kevin Burns
Mr. and Mrs. Louis Burton
Zina and Edgar Butschek
Byron Buzzini
Dorothy and Henry Cadena
Kathy Calhoun
Vivian and Kent Calhoun
Mr. and Mrs. Brent Calongne
Michael Calvan
Margo and George Calvert
Sherry and Freddie Calvin
Paul Camfield
Roberto Campos
Brandon Cancino
Anne and Douglas Cannon
Leroy Cantrell
Maria and Israel Cantu
Yvonne and Ralph Carrasco
Katherine and William Carrsow
Susan Carver
Janda and Joe Castillo
Susan Cathey
Mr. and Mrs. William
Chamberlain
Lois and Boardman Chambers
Cherri Chancellor
Jane Chapman
Mr. and Mrs. Brigido Chavez
Earl and Donna Chesser
Lacy Chimney
Laverne and Fred Chovanetz
Tammi Clanton
Clark Family Bakery
Gary E. Cochrane Co.
Vickie and Gary Cochrane
James Cole
Bonnie and Jimmy Condell
Dennis and Linda Cook
Arthur and Clemmie Cooley
Judy and Garvin Cooley
Mr. Cop
Julie and Tommy Coskrey
Mary and Chris Coughran
Cracker Barrel Old
Country Store
Tammy Craft
Betty Craig
Mr. and Mrs. Charles Craig
David Crotty
Helen and Carlos Cuellar
Darlis Cummings
Brian and Mary Cunnane
Billie Curtis
Ruth Ann and Billy Davenport
Cathy and Bill Davis
Olive and Bond Davis
Colleen and Glenn Davis
Mr. and Mrs. Garland Davis
Decorators Unlimited Inc.
Nora and Bill Dempsey
Ronnie Denker
Denny's Restaurant
Susan Desprez
Barbara Dick
Chuck Dickerson
Amy and Frank Dickey
Carolyn Dietert
Kari Dodge
Domino's Pizza
Drusilla and Kenneth Dommert
Nathan Dommert
Cynthia and Stan Dommert
Jennifer Doss
Mary Sue and Michael Douville
Downtown Pizzeria & Deli
Betsy Drapela
Staci and Terry Duff

Sandra and Donald Duiker
Milda Durrin
Thaddeus Dydalewicz
Gene Ebner
Ashley Edwards
Lana and Danny Edwards
Helen Eisaman
George Eldredge
Margaret and Tom Ellinger
Mary and Dudley Elliott
Mrs. Ellis
Katherine and Cecil Ellison
Diane and Bill Emshoff
Bunny and Artie Erfurt
Sherry and Leon Etzler
Joan and Maury Evans
Bobby Farquhar
Kathryn and Edward Farris
Mary Ann and Tarrant Fendley
Alice Ferguson
Denise and Lester Ferguson
First Presbyterian Church
Women
Nancy and Gary Fletcher
Michael Fontenot
C. W. Foster
Naty and Thomas Fowler
Wiley E. Fudge
Stephanie Gaines
Thelma Gallant
Debra and David Galloway
Sylvia and Frank Gamboa
Jan Gambrell
Sabrina and Matt Garces
Nancy and Lawrence Garcia
Rachel and Cory Garrett
Jesse Garza
Rosie Garza
Patty Gaston
Lonnie and Myra Gaylor
Johnnie Geric
Regine and Reuben Ginsberg
Judy Glaze
Marty and T. R. Godbout
Lois Ann and Gary Godfrey
Michelle and Doug Godfrey
Sherrrie and William Gold
Mr. and Mrs. Jose Gomez
Rafaela and Louis Gonzales
Lulu Gonzalez
Gary Gool
Betsy and Henry Gorman
Charles Granstaff
Toni and James Green
Loren Greenshield
Natascha and Kevin Greer
Laurie and Heath Gregory
Gaye Gresham
Dorothy and Erwin Grimes
Cullen Grinnan
Debbie and David Grinnan
Jane and Dale Groll
Joe Gutierrez
Lorraine and †John Haglund
Lorraine Haglund
Lou Ann and William Hahn
Don Hainlen
Robert and Margaret Hall
Jane and Dick Harben
Connie and James Harris
Harry A. Parrish & Associates
Mr. and Mrs. Bill Hatcher
Christine and Robert Hausser
Ruth and Bob Haynes
Sug and Don Hedgpeth
Robert Henneke
Martha and Billy Hensley
Jennifer and Frankie Hinds
Mrs. Hinrichs
Bulah and Jeff Hodge
Frances Hoffman

Monica and Heath Holcomb
Mary and George Holekamp
Leah Holekamp
Patsy and Raymond Holekamp
Debbie and Leroy Hollan
Bob Holloway
Robert Holloway
David Howard
Mr. and Mrs. Gary Huckabay
Charlmaigne and Roosevelt
Huggins
Dee and Charles Hunt
Joan and Mike Hyden
IBM International
Foundation (IIF)
IHOP
Emily Iness
Joanna and Roland Ingram
Cynthia and Royce Itschner
Dale Jackson
Lori Jaimes
T J Jarrett
Jennifer and Shawn Jensen
Aimee and Kyle Johnson
Mike and Kathy Johnson
Misty Johnson
Richard Johnson
Muriel and Richard Johnston
Fran and John Jones
Miriam and Hugo Jorda
Joseph Financial Partners
Alice and Raymond Juarez
Donna Kappler
Chris and Jan Kaskow
Heather Kattawar-Engstrom
Jonathan Kaulfus
Stephanie and Carey Keller
Curtis and Karen Kelly
Linda and Arthur Kelly
James Kenalty
Michael and Dawn Kerr
Greg Kirkham
Tim Kirkpatrick
Fred Kite
Gay and Margaret Klaerner
Charlene and Francis Klekar
Catherine and Ed Knoll
Kristin Knoll
Ruth and Eugene Koncaba
Ronnie Koncaba
James Krauter
Debbie Land
Dorothy and Tom Landers
Gale Laning
Tamara Larkin
Paul and Bobbie Lasaint
Steve Laufman
Marie and John Laughter
Karen and Alan Leaf
Louise and Robert Leahy
Carlton Lee
Sherri and Stephen Leffingwell
Teresa and Rafael Leija
Nell Lenard
Charlene Leopold
Joyce Lespreance
Margaret Letscher
D. B. Leverett
Roseanneli Leverett
Sally Lewis
Betty and Lee Liggett
Cody and Tracy Lipps
Elizabeth and Charles Loggie
Marty Longbottom
Thelma Lopez
Imogene and Wayne Luhrman
Larry Lynch
Kimberly and Randy
MacNaughton
Erwin Madrid
Ann Mahon

Myrtle Maier
Stevie Male
Robert and Virginia Malone
Janet Maltman
Mamacita's
Sandra Mann
Marathon Oil Co.
Richard Marhofer
Charlotte Marrow
Doris Martin
San Martin
Cristina Martinez
Krystle Martinez
Rebecca and Lionel Martinez
Linda and Larry Marwedel
Kim Mascaritola
Sharon and Ronald Mascheck
Frances Mason
Mae Matsumoto
Kally Maunders
Cameron Mauze
Heather Mauze
Bill Maynard
Julie and Bobby McConathy
Janet and David McConkey
Susie and Joe McCracken
Debra and Kerry McCutchen
Ann and Jack McDaniel
Thomas McDonell
Nancy and Peter McFarlane
Bridget and Derek McKiddie
Diane McRae
Scott Meadow
Wallace Mebane
Cindy and Doak Medchill
Antonina and Benjamin Medina
Lorraine and Chris Meek
Amara and Bayo Megwa
Richie Mercer
Kathryn and Roy Meredith
Jinny Meyer
Robin and William Mears
Lavonne Miller
Tish and Kiley Miller
Pam and Randy Miller
Adele Miller
Yunis Minhas
Kathy Mitchell
E. N. and R. H. Miyatake
Leslie and Ben Modisett
Carol and Robin Moffat
Ruben Monroy
Rosemary and Steven Moore
Gloria and Lupe Moreno
Jesse Moreno
Toni and Bill Morris
Dr. and Mrs. Robert Morton
Betty and Richard Mosty
Mr. and Mrs. Wheeler Mosty
Anthony Moyer
Bobbi and Frank Mugford
Vicki and Thurman Mullins
Annelise Munoz
Adele Murphy
Carrie Murr
Sandra and John Murray
Janie and Julius Neunhoffer
Marj Nicholson
Sue Nidever
Diane and Wayne Norman
Bobby Norwood
Vera and Joe Norwood
Joan and Mike Noyes
Luis Obiyo
Michelle and Wade Oehler
Rose and A. M. Olander
Omya Canada Inc.
Andrea and Ken O'Neal
Maureen and Hector Ortega
Anne and Kerwin Overby
Irma Pacheco

HONOR ROLL OF DONORS

Clarie and Billy Pahl
 James and Sheryl Parcell
 Jonathan and Saby Park
 Andrew Parker
 Virgil Parker
 Teresa Parman
 Dianne and Harry Parrish
 Thomas and Jeanne Parsley
 Stacey Patsko
 Ruth Pearson
 David Peeples
 Sandra and Raul Pena
 Sally Pena
 John Pesek
 Sally and Ronald Peterson
 Pier 1 Imports
 Rosamond and James Pina
 Rosalie Pinson
 Janice and Don Plessas
 Amanda Prehn
 Presbyterian Women
 Libby and John Pressler
 Bertha Priour
 Leslie Proctor
 Louise and E. W. Purdy
 Myrna and Tom Purifoy
 Louis Quin
 Claire and David Rabson
 Vickie and Donald Ragsdale
 Carlos Ramirez
 Lauree and Kevin Rasso
 Jo and Boyd Rawlins
 Jerri and Bill Ray
 Nancy and Henry Read
 Marilyn and Pat Reagan
 Melissa Reasoner
 Dianna and Robert Rees
 Jeffery Reid
 Claudine Reinarz
 Paula and Thomas Repka
 Louise Reynolds
 Bryant Richards
 Julie Richardson
 Tammy and Tate Richburg
 Laurie and Robby Riggs
 Cathy Ritter
 Charlotte Ritter
 Jake Roa
 Eva and James Rodriguez
 Linda and Roy Rodriguez
 Oscar Rodriguez
 Maria Rojas
 Evelyn and John Rolfe
 Tina and Mario Roth
 Donna Roueche
 Tino and Mandy Salazar
 Michelle Saldana
 Alma and Nichoas Saldana
 Alicia and Ruben Salinas
 Aracely and Jake Salinas
 Susan Sanders
 Mr. and Mrs. Walter Sandifer
 Karyn and Bryant Saner
 Jose Santos
 Sharon Scanlan
 Kathleen and Greg Schelling
 Mr. and Mrs. Schlesinger
 Marian Schlunegger
 Marion and Scotty Schmerber
 Loretta and Charles Schmidt
 Vicki and Dorman Schmidt
 Suzi and Vic Schneider
 Catherine and Steve Schulte
 Mr. and Mrs. Patrick Scogin
 Mary and Dow Scott
 Mark and Cathy Scozzari
 Mary Seay
 Gregory Seibert
 Virginia Seidel
 Margaret and Edward Shaifer
 Vickie Shirley

Lindsay Shupe
 Jim Siebenthal
 Amy Simon
 Mr. and Mrs. Simond
 Jan Skaggs
 Leigh and Duffy Slade
 Susan and Bill Sliva
 John Smalling
 Jean Smith
 Michele and Kevin Smith
 Linda and Terry Smith
 Snippers Family Hair Salon
 Laran Snyder
 Linda and Donald Somerville
 Southern Oaks Baptist Church
 Edith and Phillip Spalding
 Gibi and Mickey Speakmon
 Emma and Curtis Spearman
 Michele and Scott Speck
 Ann and Richard Spencer
 Irene and Martin Spenrath
 Peggie Stacy
 Mr. and Mrs. Russell Stanger
 Joe Stead
 Mary and Jerry Stehling
 Mariann and Paul Steldt
 Jennifer Stelmach
 Stewart Davis & Co.
 Gloria Stewart
 Karen and Bruce Stidham
 Anita and Maris Stipnieks
 Mr. and Mrs. Stone
 Mr. and Mrs. Kent Stow
 Linda and Tim Strickland
 Annette and Steve Sudyka
 Sheila and Danny Sullivan
 Ann and Ray Sullivan
 Mae Sunday
 Wilbert and Marylee Supak
 Cassie Sweeney
 Ruth Swift
 Taco Casa
 Karen and Stephen Tanner
 Judy and Roy Taylor
 Techno Metrica Market
 Intelligence
 Gena and Jack Teer
 Cory Tellis
 Pamela Tellis
 Rita Tenorio
 Carolyn and James Thomas
 Christine Thompson
 Mathew Thompson
 Danetta and Andy Thomson
 Mary and Joseph Tisdell
 Martha and Jimmy Tom
 Chrissie and Brandon Tomchuk
 Felipe Tovar
 William and Charmian Tracy
 Mr. and Mrs. Trimble
 Miranda Trussell
 Kim and David Ulcak
 Tara Urbanski
 Shelley Van Dusen
 Ellen Van Dyke
 Janise Van Tassel
 Jeffery and Linda Van Wart
 Mary and Peter Vann
 Susan and Larry Vano
 Cynthia and William Vaughan
 Diane and David Vaughn
 Jennifer and Johnny Velazquez
 Verizon Foundation
 Bernice Villcheck
 Lois and John Villcheck
 Lorna and Alton Vrana
 Gloria and Taylor Wagner
 Walgreens
 Mary and Rob Walker
 Marrene and Glenn Wallace
 Helen Wardroup

Nancy and Bill Warren
 Melinda and Jim Wasson
 Water Street Chiropractic
 Margie and James Watson
 Nina and Bob Weinberg
 Marion and Fred Wells
 Mary and Chris Wendel
 Alice and Alan Werchan
 Barbara and Ken West
 Nichelle White
 LaShelle and Russell Whitmore
 Larresia and Lewis Whitten
 Krissy and Greg Whittington
 Chris Wilems
 Raynell Wilke
 Laverne Wilkinson
 Claude and Sarah Williams
 Josiah Williams
 O'Gene and Lewis Williams
 Williamson Parts
 Frank and Katie Williamson
 Mr. and Mrs. Kenneth Wilson
 Terri and Steven Wilson
 Missy Wilton
 David Winkler
 Rey Winsky
 Zaidee and James Winton
 Anita and Monte Wise
 Barry and Louise Wood
 Karen and Mark Woodhull
 Johnny and Elaine Woytek
 Dawn Wright
 Sherri Yates
 Alta Mae and Bob Yerger
 Mr. and Mrs. Yonko
 Stacy Young
 Laura Zapata
 Jan and Michael Zenner
 Katherine and Ted Zgourides

Schreiner Oaks Society

Recognizing those who have included Schreiner in their estate plans

New Members

Traci and Daron Allen
 Cheryl and Chris Bratton
 Kamron Farhoudi
 Donna and Royce Faulkner
 †David Guin
 Kathleen Hudson
 Ann and Gene Marshall
 Ida Rose Dietert and C.E. Moore Estate
 Hazel Richmond
 Lillian Rogers Estate
 Mary Frances Sherlock Estate
 Robert Young

† = deceased

Schreiner University does not discriminate in admissions, educational programs, extra-curricular programs or employment against any individual on the basis of that individual's race, color, sex, sexual orientation, religion, age, disability, veteran status or ethnic origin. Inquiries/complaints should be forwarded to the Director of Human Resources, phone 830-896-5411.

HCCF Polar Bear Challenge



Fred Gamble, Schreiner University's vice president for administration and finance, hits the 42-degree water of the Guadalupe River Jan. 1 as part of the annual Polar Bear Challenge fundraiser at Mo-Ranch Conference Center. Each year, Mo-Ranch sponsors the Polar Bear Challenge to raise money to benefit a local charity. The 2008 challenge benefits Schreiner's Hill Country College Fund, which provides financial aid to Schreiner students from Kerr, Gillespie, Bandera, Kendall, Kimble Edwards and Real counties. Gamble was the event's top fundraiser, with more than \$6,000. Overall, the event raised more than \$18,000, a Polar Bear record.

Others on the official Schreiner Polar Bear Team were Arthur Bell, Mike Lowe, Paul Camfield, Ron Macosko, Sarah Dixon, Andrew Miller, Paco Espinoza, Kiley Miller, Kamron Farhoudi, Pat Murray, Jose Flores, Rick Phipps, Fred Gamble, Greg Shrader, Charles Gray, Bob Waller, Matt Goodwyn, Mindy Wendele and Peter Lewis.

Online Giving

Supporting Schreiner University is easier than ever now. Please visit our Online Giving Web site at www.schreiner.edu/giving where you can make a secure gift—one that will benefit Schreiner students for years to come—in a matter of seconds. If you have questions, contact Phyllis Whittington, director of development, pjwhittington@schreiner.edu or phone 830-792-7208.

See you at Recall!

Schreiner Recall 2008 will be the weekend of April 11-13. The theme this year is "Schreiner Spirit Through the Years."

"This year we will have a Schreiner Alumni Night at Pampell's," Paul Camfield, associate director of alumni relations said. "It will be a chance for all ages to gather at a classic Kerrville location." The Recall golf tournament will be at Riverhill Country Club. Watch the Web site at www.schreiner.edu/recall for more details and news of other events, or call or e-mail Paul at 830-792-7206; phcamfield@schreiner.edu. You can register and pay the registration fee online, too.

Calling these classes

Are you class of '58? How about '38, '48, '68, '78, '88 or '98?

We're especially encouraging former students from these years to come back to Schreiner for Recall 2008, along with all former students and their families.



Win an iPod

The Schreiner Former Students Association wants to beef up its e-mail database. If you are a former student, send us your current e-mail address and we will enter your name in a drawing for a 2007 Apple iPod Nano. The winner's name will be drawn during Recall weekend, April 11-13. Send all e-mail information to Susan Carver at scarver@schreiner.edu.

NONPROFIT ORG.
U.S. POSTAGE
PAID
LUBBOCK, TX
78028
PERMIT #764

Schreiner University
2100 Memorial Blvd.
CMB 6201
Kerrville, Texas 78028-5697

NEWSLETTER OF SCHREINER UNIVERSITY
Inside
Schreiner